

CUSTOMIZE YOUR SOCKET MOUNTING

STEP 1: SELECT YOUR PREFERRED MOUNT

Flush Mounts

Fits into an existing space in your vehicle, camper or application, giving your accessory socket installation a superior look. There are three flush mounts to choose from; single, double and triple.



STEP 2: SELECT YOUR PREFERRED SOCKET

There is a wide range of sockets to choose from. See pages 12-13.



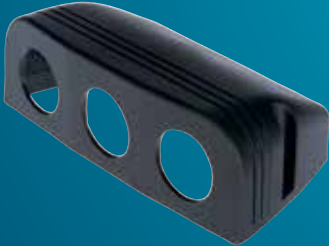
STEP 3: MOUNT YOUR SOCKET

By combining your preferred mount with your preferred socket, you can create any mounting solution you need.



Surface Mounts

Creates the additional space you need in your vehicle, camper or application. Professional moulded design for a refined finish. There are three surface mounts to choose from; single, double and triple.



MOUNT AND SOCKETS ARE INTERCHANGEABLE



SINGLE FLUSH MOUNT PANEL

PART NO. TDR06111



| SPECIFICATIONS | |
|--------------------|---|
| OVERALL DIMENSIONS | 60mm x 43mm |
| CENTRE TO CENTRE | 48mm |
| SIZE | 29mm mounting hole |
| PURPOSE | Suitable for housing the Thunder socket range |

DOUBLE FLUSH MOUNT PANEL

PART NO. TDR06112



| SPECIFICATIONS | |
|--------------------|---|
| OVERALL DIMENSIONS | 105mm x 45mm |
| CENTRE TO CENTRE | 86mm |
| SIZE | 29mm mounting hole |
| PURPOSE | Suitable for housing the Thunder socket range |

TRIPLE FLUSH MOUNT PANEL

PART NO. TDR06113



| SPECIFICATIONS | |
|--------------------|---|
| OVERALL DIMENSIONS | 150mm x 43mm |
| CENTRE TO CENTRE | 132mm |
| SIZE | 29mm mounting hole |
| PURPOSE | Suitable for housing the Thunder socket range |

SINGLE SURFACE MOUNT PANEL

PART NO. TDR06121



| SPECIFICATIONS | |
|----------------|---|
| DIMENSIONS | 50mm x 54mm x 80mm |
| SIZE | 29mm mounting hole |
| PURPOSE | Suitable for housing the Thunder socket range |

DOUBLE SURFACE MOUNT PANEL

PART NO. TDR06122



| SPECIFICATIONS | |
|----------------|---|
| DIMENSIONS | 50mm x 96mm x 80mm |
| SIZE | 29mm mounting hole |
| PURPOSE | Suitable for housing the Thunder socket range |

TRIPLE SURFACE MOUNT PANEL

PART NO. TDR06123



| SPECIFICATIONS | |
|----------------|---|
| DIMENSIONS | 50mm x 148mm x 80mm |
| SIZE | 29mm mounting hole |
| PURPOSE | Suitable for housing the Thunder socket range |

POWER SOCKET

PART NO. TDR06101



| SPECIFICATIONS | |
|----------------|---------------------|
| VOLTAGE | 12/24 Volts |
| AMPS | 20 Amp @ 12 Volts |
| MOUNT | Dash or panel |
| ILLUMINATION | Blue LED back light |
| SIZE | 29mm mounting hole |
| TERMINALS | 2 x blade |

DOUBLE USB SOCKET

PART NO. TDR06102



| SPECIFICATIONS | |
|----------------|------------------------|
| VOLTAGE | 12/24 Volts |
| AMPS | 1 x 1 Amp, 1 x 2.1 Amp |
| MOUNT | Dash or panel |
| ILLUMINATION | Blue LED back light |
| SIZE | 29mm mounting hole |
| TERMINALS | 2 x blade |

MERIT SOCKET

PART NO. TDR06103



| SPECIFICATIONS | |
|----------------|--------------------|
| VOLTAGE | 12/24 Volts |
| AMPS | 16 Amp |
| MOUNT | Dash or panel |
| SIZE | 29mm mounting hole |
| TERMINALS | 2 x blade |

ENGEL STYLE SOCKET

PART NO. TDR06107



| SPECIFICATIONS | |
|----------------|---|
| VOLTAGE | 12/24 Volts |
| AMPS | 15 Amp @ 12 Volts 7.5 Amp @ 24 Volts |
| MOUNT | Dash or panel |
| SIZE | 29mm mounting hole |
| TERMINALS | 2 x blade |

VOLTMETER

PART NO. TDR06104



| SPECIFICATIONS | |
|----------------|---|
| VOLTAGE | 12/24 Volts |
| MOUNT | Socket mount, dash or panel |
| DISPLAY | Blue LED |
| RANGE | 5 - 30 Volts |
| SIZE | 29mm diameter |
| PURPOSE | Can be used to monitor your trailer breakaway battery |

AMMETER

PART NO. TDR06105



| SPECIFICATIONS | |
|----------------|--|
| VOLTAGE | 12/24 Volts |
| MOUNT | Socket mount, dash or panel |
| DISPLAY | Blue LED |
| RANGE | 0 - 10 Amp |
| SIZE | 29mm diameter |
| PURPOSE | Can be used to monitor your accessory current draw |

VOLT/AMP DISPLAY

PART NO. TDR06106



| SPECIFICATIONS | |
|----------------|---|
| VOLTAGE | 12/24 Volts |
| MOUNT | Dash or panel |
| DISPLAY | Blue LED |
| RANGE | Voltage: 5 - 30 Volts Current: 0 - 10 Amp |
| SIZE | 29mm diameter |
| PURPOSE | Can be used to monitor your trailer breakaway battery and your accessory current draw |

CIGARETTE LIGHTER PLUG

PART NO. TDR06017



| SPECIFICATIONS | |
|----------------|----------------------|
| VOLTAGE | 12/24 Volts |
| AMPS | 10 Amp |
| LENGTH | 200mm pigtail |
| FEATURES | With mini blade fuse |