

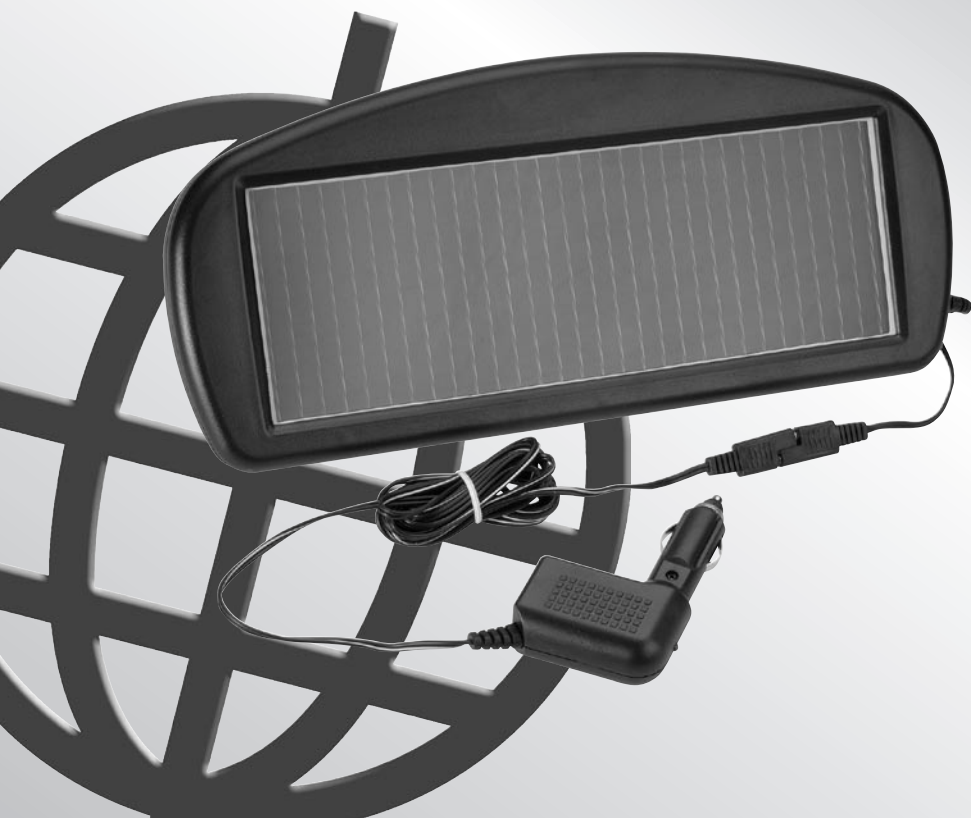
**PROJECTA**

P/No. SPA100

12 VOLT, 1.5 WATT

# 100mA SOLAR PANEL

AMORPHOUS



# WARNING

- Read the operating instructions before use.
- Lead Acid Batteries can be dangerous. Ensure no sparks or flames are present when working near batteries. Eye protection should be used.
- Make sure the solar panel is mounted securely or stowed while driving.
- For use with 12V lead acid batteries only.
- Follow all vehicle manufacturer’s instructions.

# FEATURES

- Ideal for maintaining the battery of an infrequently used vehicle.
- Prevents power drain caused by radio memories, clocks, alarms & on-board computers.
- Amorphous solar cell technology, maintains the battery in peak condition, even in low light (cloudy) conditions.
- Smart control unit prevents solar discharge at night.
- Easy to use controller plugs directly into your vehicle’s cigarette lighter socket.
- Flashing ‘Red’ LED shows when the solar panel is producing power.
- Can be used for direct battery connection with optional lead P/No. CLE1006 (sold separately).

# SPECIFICATIONS

Part Number:	SPA100
Type:	Amorphous
Rated Power:	1.5 Watt at 1000W/m², 25°C
Peak Power Voltage:	13-15VDC
Peak Power Current:	90-105mA
Short Circuit Current:	115mA
DC lead:	3m

## Recommended Battery sizes (Maintenance)

AUTOMOTIVE	100–550CCA
MARINE	150–600MCA
DEEP CYCLE	7–40Ah

# OPERATING INSTRUCTIONS

## Placement

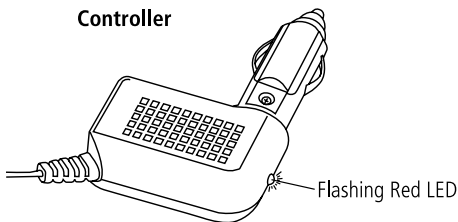
While the vehicle is parked, place the solar panel inside the vehicle in a location that receives as much full sun as possible, such as the rear parcel shelf, dash, front seat or near a window.

Remove and securely stow the unit before driving the vehicle to prevent the risk of a flying object in the event of heavy braking or an accident.

The panel can be mounted using the 'Key Holes' on the base for permanent static applications.

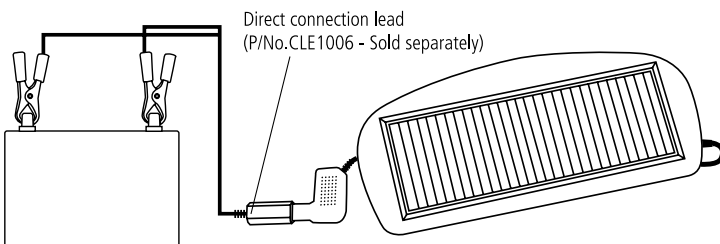
## Connection through cigarette lighter socket

1. Connect the 3m DC lead to the solar panel.
2. Plug the 'Controller' into the vehicle's cigarette socket. The socket needs to have a permanent electrical connection to the vehicle's battery to allow the solar panel to charge the battery even when the ignition is off & the key is removed.
3. When there is sufficient sunlight the red LED in the top of the 'Controller' will flash to indicate that the panel is producing power and the unit will provide a trickle charge to the battery. The unit will not overcharge the battery and has an in-built diode to prevent solar discharge at night therefore it may be left connected indefinitely.



## Connection direct to a battery

1. To connect directly to a 12V battery you will need the direct connection accessory lead (P/No. CLE1006 - Sold separately).
2. Plug the 'Controller' into the cigarette socket of the accessory lead.
3. Connect the red battery clip to the Positive (+) battery terminal or post.
4. Connect the black battery clip to the Negative (-) battery terminal or post.
5. When there is sufficient sunlight the red LED in the top of the 'Controller' will flash to indicate that the panel is producing power and the unit will provide a trickle charge to the battery. The unit will not overcharge the battery and has an in-built diode to prevent solar discharge at night therefore it may be left connected indefinitely.



## **Solar panel care**

To ensure maximum output, keep the glass surface clean with a soft damp cloth.  
The solar panel uses glass substrate, handle and store with care. Avoid contact with acid and alkali.

## **FREQUENTLY ASKED QUESTIONS**

- Q. My vehicle's cigarette socket does not have a permanent connection to the battery, what can I do?
- A. For occasional use the direct connection accessory allows direct connection to the battery. (P/No. CLE1006, available from a Projecta reseller).  
For frequent use, ask an auto electrician to connect the vehicle's cigarette socket to the battery directly.
- Q. Can I mount the panel outside?
- A. The SPA100 is designed for in-vehicle (out of weather) applications.  
For external applications use the Projecta SPA400 or SPA900 Solar panels.

### **VICTORIA (HEAD OFFICE)**

Brown & Watson International Pty Ltd  
3 Millennium Court, Knoxfield  
Victoria 3180.  
Telephone (03) 9730 6000  
Facsimile (03) 9730 6050  
National Toll Free 1800 113 443

### **NEW SOUTH WALES**

Brown & Watson International Pty Ltd  
PO Box 995  
Campbelltown, NSW 2560  
Facsimile (02) 4628 3403  
National Toll Free 1800 113 443

### **SOUTH AUSTRALIA**

Brown & Watson International Pty Ltd  
5 Phillips Street, Thebarton  
South Australia 5031  
Telephone (08) 8443 3018  
Facsimile (08) 8443 3008

### **WESTERN AUSTRALIA**

Brown & Watson International Pty Ltd  
85 Sheffield Road, Welshpool  
Western Australia 6106  
Telephone (08) 9451 4526  
Facsimile (08) 9358 1445

### **QUEENSLAND**

Brown & Watson International Pty Ltd  
2A/3375 Pacific Highway, Underwood  
Queensland 4119  
Telephone (07) 3808 2482  
Facsimile (07) 3208 3137

### **NEW ZEALAND**

#### **Narva New Zealand Ltd**

22-24 Olive Road  
PO Box 12556 Penrose  
Auckland, New Zealand  
Telephone (09) 525 4575  
Facsimile (09) 579 1192