

# LPG SERIES-GEL Battery

## LPG12-38 (12V38AH)

### Specification

Nominal Voltage	12V	
Nominal Capacity(20HR)	38.0AH	
Dimension	Length	197 ± 2mm (7.76 inches)
	Width	165 ± 2mm (6.50 inches)
	Container Height	170 ± 2mm (6.69 inches)
	Total Height (with Terminal)	170 ± 2mm (6.69 inches)
Approx Weight	Approx 13.5 kg (29.77lbs)	
Terminal	T6	
Container Material	ABS	
Rated Capacity	38.0 AH/1.90A	(20hr, 1.80V/cell, 25°C/77°F)
	35.3 AH/3.53A	(10hr, 1.75V/cell, 25°C/77°F)
	30.4 AH/6.08A	(5hr, 1.75V/cell, 25°C/77°F)
	26.5 AH/8.82A	(3hr, 1.75V/cell, 25°C/77°F)
	20.9 AH/20.9A	(1hr, 1.67V/cell, 25°C/77°F)
Max. Discharge Current	380A (5s)	
Internal Resistance	Approx 12.0mΩ	
Operating Temp. Range	Discharge	-20~55°C (-4~131°F)
	Charge	0~40°C (32~104°F)
	Storage	-20~50°C (-4~122°F)
Nominal Operating Temp. Range	25 ± 3°C (77 ± 5°F)	
Cycle Use	Initial Charging Current less than 9.5A. Voltage	
	14.4V~15.0V at 25°C(77°F)Temp. Coefficient -30mV/°C	
Standby Use	No limit on Initial Charging Current Voltage	
	13.5V~13.8V at 25°C(77°F)Temp. Coefficient -20mV/°C	
Capacity affected by Temperature	40°C (104°F)	103%
	25°C (77°F)	100%
	0°C (32°F)	86%
Self Discharge	Leoch LPG series batteries may be stored for up to 9 months at 25°C(77°F) and then a freshening charge is required. For higher temperatures the time interval will be shorter.	



### Applications

- ◆ Telecommunications
- ◆ Solar system
- ◆ Wind power system
- ◆ Wheelchair
- ◆ Floor cleaning machines
- ◆ Golf trolley
- ◆ Boats



### Constant Current Discharge (Amperes) at 25 °C (77°F)

F.V/Time	20min	30min	45min	1h	2h	3h	4h	5h	6h	7h	8h	9h	10h	20h
1.85V/cell	32.1	25.2	19.3	16.1	10.2	7.79	6.45	5.57	4.81	4.26	3.84	3.51	3.32	1.82
1.80V/cell	36.8	28.2	21.2	17.8	11.1	8.35	6.84	5.85	5.05	4.46	4.02	3.69	3.47	1.90
1.75V/cell	41.4	31.0	23.0	19.0	11.7	8.82	7.16	6.08	5.23	4.61	4.15	3.80	3.53	1.94
1.70V/cell	44.6	33.2	24.4	20.1	12.4	9.18	7.40	6.27	5.41	4.77	4.28	3.90	3.62	1.96
1.67V/cell	46.4	34.5	25.2	20.9	12.7	9.47	7.58	6.40	5.50	4.84	4.34	3.95	3.66	1.98
1.60V/cell	50.3	36.9	27.1	22.2	13.3	9.85	7.87	6.60	5.63	4.94	4.42	4.04	3.73	2.01

### Constant Power Discharge (Watts/cell) at 25 °C (77°F)

F.V/Time	20min	30min	45min	1h	2h	3h	4h	5h	6h	7h	8h	9h	10h	20h
1.85V/cell	61.5	48.6	37.3	31.4	20.0	15.3	12.7	11.0	9.52	8.45	7.64	6.99	6.61	3.64
1.80V/cell	69.6	53.8	40.9	34.4	21.5	16.3	13.4	11.5	10.0	8.82	7.98	7.33	6.90	3.79
1.75V/cell	77.3	58.7	43.9	36.7	22.7	17.2	14.0	11.9	10.3	9.11	8.22	7.54	7.03	3.86
1.70V/cell	82.4	62.3	46.2	38.6	24.0	17.8	14.4	12.3	10.6	9.39	8.45	7.74	7.18	3.90
1.67V/cell	84.8	64.0	47.5	39.8	24.5	18.3	14.7	12.5	10.8	9.50	8.56	7.82	7.26	3.94
1.60V/cell	90.8	67.9	50.7	42.1	25.3	19.0	15.2	12.8	11.0	9.68	8.69	7.97	7.39	3.99

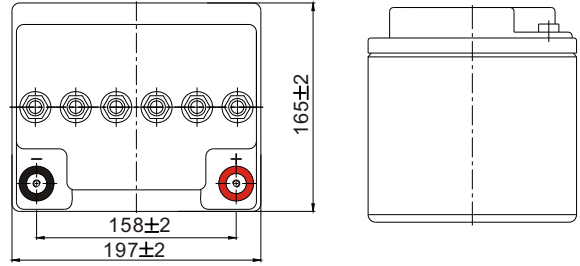
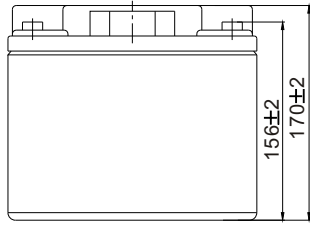
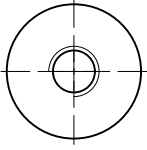
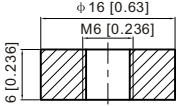
Specifications subject to change without notice.



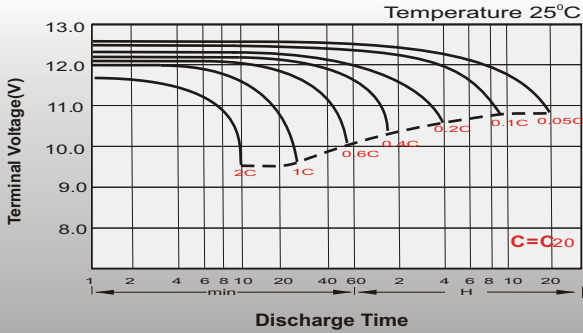
# Dimensions

## T6 Terminal

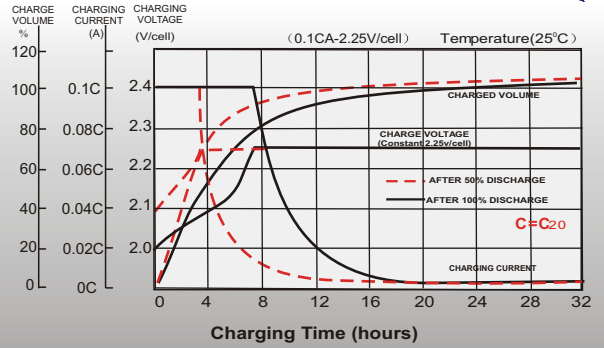
Unit: mm [inches]



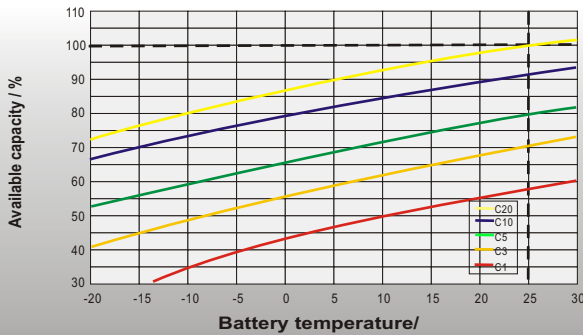
# Discharge Characteristics



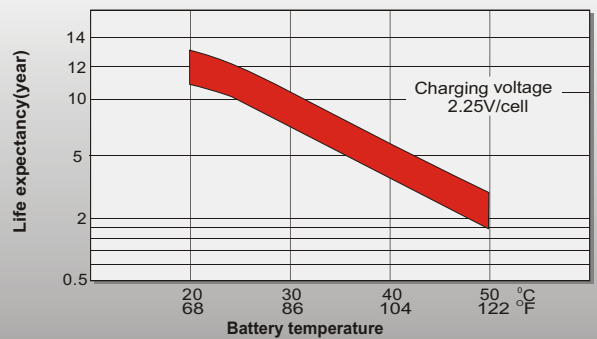
# Float Charging Characteristics



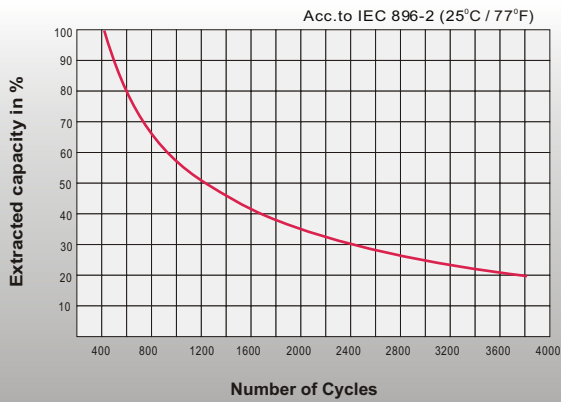
# Temperature Effects in Relation to Battery Capacity



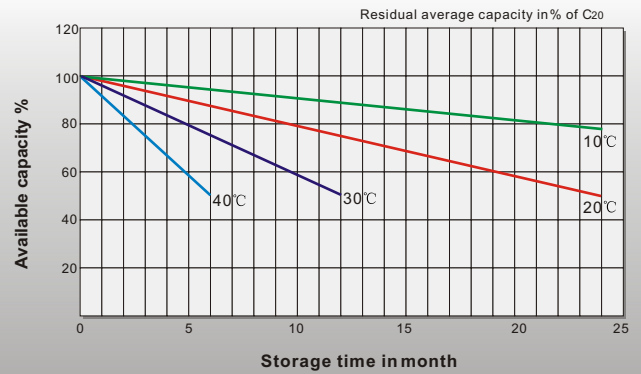
# Effect of Temperature on Long Term Float Life



# Cycle Life in Relation to Depth of Discharge



# General Relation of Capacity VS. Storage Time



# Sales Office

## China sales office:

Add: 5th Floor, Xinbaohui Bldg., Nanhai Blvd.,  
Nanshan, Shenzhen, China. 518052  
Tel: +86-755-86036060 (100 lines)  
Fax: +86-755-26067269  
E-mail: export@leoch.com  
Http://www.leoch.com

## HongKong sales office:

Add: Workshop C, 33/F, TML Tower,  
No. 3 Hoi Shing Road, Tsuen Wan,  
New Territories, Hong Kong  
Tel: +852 35786666  
Fax: +852 21170016  
E-mail: sales.hk@leoch.com

## Singapore sales office:

Add: No. 1 Tech Park Crescent,  
Singapore 638131  
Tel: +65 68416629  
Fax: +65 68443210  
Email: sales.sg@leoch.com

## North America sales office:

Add: 19751 Descartes, Unit A,  
Foothill Ranch, CA 92610, USA  
Tel: 949-588-5853  
Fax: 949-588-5966  
E-mail: sales@leoch.us  
Http://www.leoch.com

## Europe sales office:

Add: 9B Wheatstone Court, Waterwells  
Business Park, Gloucester, GL2-2AQ,  
UK United Kingdom  
Tel: +44(0) 1452 729428 / 1452 729696  
Fax: +44 (0)1452-690125  
E-mail: Sales.Europe@leoch.com