

Bosch MP Deep Cycle Power 6V Golf Cart Battery



Applications

Golf Cart	Electric Recreational Vehicle (RV)
Electric Utility Vehicle	Floor Machine

Specifications

Product Series	Technology
MP Deep Cycle	Deep Cycle Flooded

THE BATTERY CELL

Technical Information

Nominal Voltage	Nominal Capacity (20HR)	Reserve Capacity
6V	225 AH	25A - 445 min, 75A - 115 min

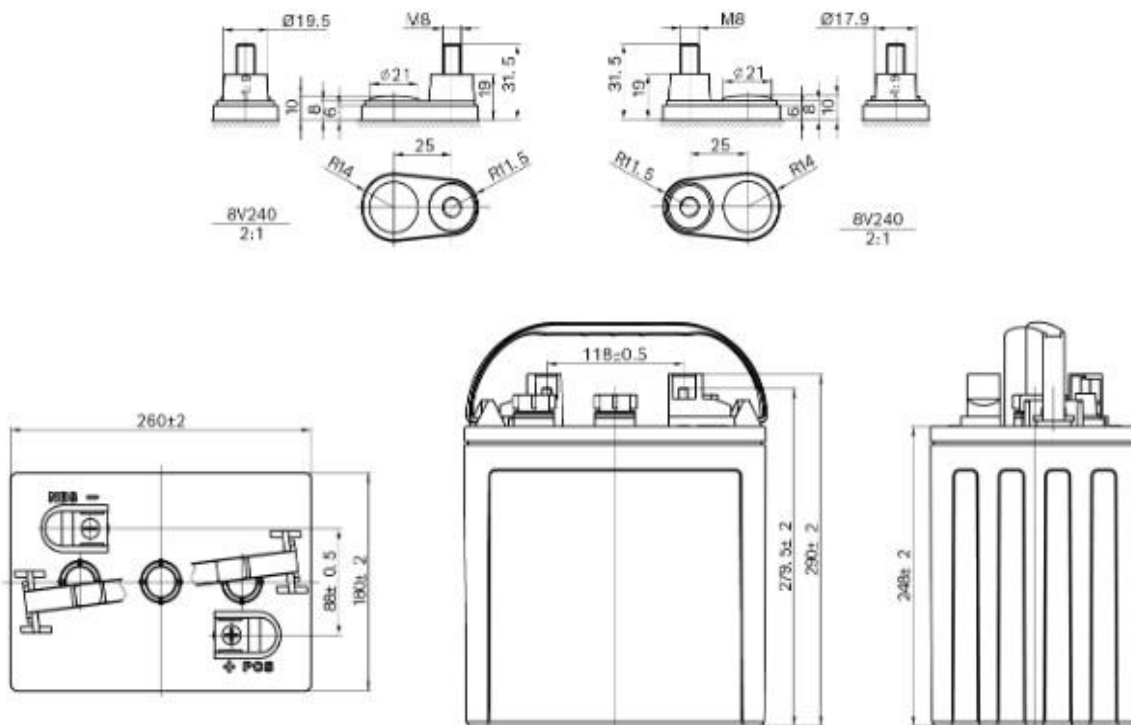
Case Size Dimension

Length	Width	Container Height
260 mm (10.23 inches)	180 mm (7.00 inches)	248 mm (9.76 inches)
Total Height (with Terminal)		
279.5 mm (11.00 inches)		

Approx Weight (Gross)	Terminal
Dry 20.50 kg (45.10 lbs), Wet 27.50 kg (60.50 lbs)	(+)
Container Material	Lid Design
Polypropylene	Accessible

THE BATTERY CELL

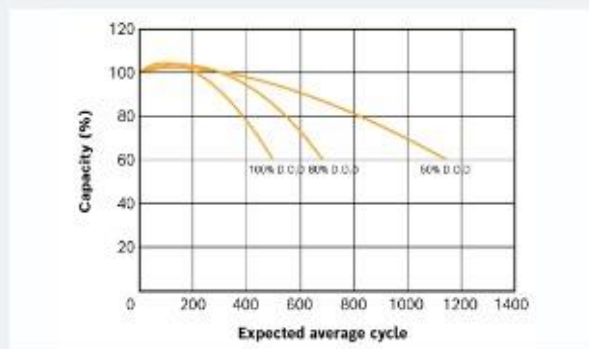
Product Dimension & Design



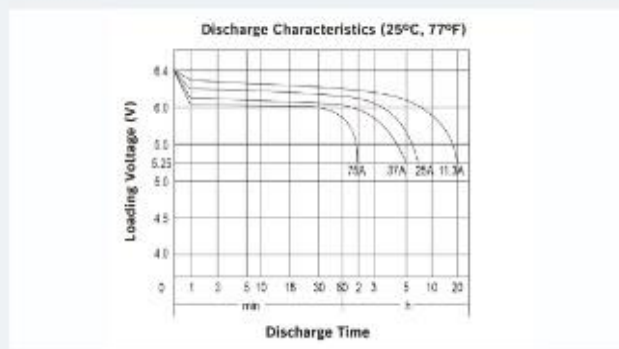
FLOODED | M8 | 260L × 180W × 248H, TOTAL 279.5H (mm)

Product Performance Charts

Depth of Discharge Cycling Test



Discharge Characteristics Test



THE BATTERY CELL